

Formulate C-Shaped Wall

C-WALL

Formulate® tension fabric conference walls are lightweight, stylish solutions to your meeting space needs. Ergonomically designed, Formulate C-shaped and Serpentine shaped walls combine the latest developments in fabric printed technology with gently curved 50mm aluminum frames to create private, cozy and stylish conference areas within any space.



features and benefits:

- State-of-the-art 50mm curved aluminum tube frame with sturdy internal spigots
- Perfect for a small table and chairs or benches for seating
- Create a stylish, semi-private space
- Kit includes: one frame, one dye-sublimated zipper pillowcase graphic, and one wheeled molded storage case
- Lifetime hardware warranty against manufacturer defects

dimensions:

Hardware

Graphic

Assembled unit:
89.59" w x 84" h x 60" d
2276mm(w) x 2133mm(h) x 1526mm(d)

Approximate weight:
42 lbs / 19 kg

Refer to related graphic template for more information.

Visit:
www.exhibitors-handbook.com/graphic-templates

Shipping

additional information:

Packing case(s):
1 OCE-2

Shipping dimensions:
OCE-2: Expandable case length (l) may vary
40" - 66" l x 18" h x 18" d
1016-1677mm(l) x 458mm(h) x 458mm(d)

Approximate total shipping weight:
63 lbs / 29 kg

Graphic material:
Dye-sublimation zipper pillowcase fabric

When included in a larger kit, a different packaging solution will be listed to accommodate all contents of the kit. Individual packaging no longer provided.

We are continually improving and modifying our product range and reserve the right to vary the specifications without prior notice. All dimensions and weights quoted are approximate and we accept no responsibility for variance. E&OE. See Graphic Templates for graphic bleed specifications.

Included In Your Kit

Tools, Components, & Connectors



HEX KEY SET x1

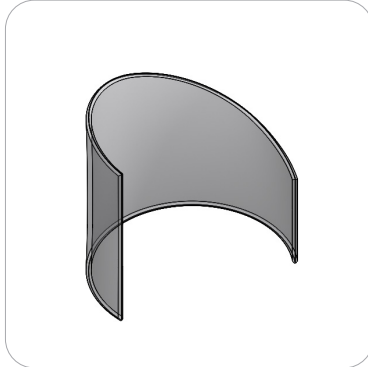


ES30 x3



ES50 x9

Graphics



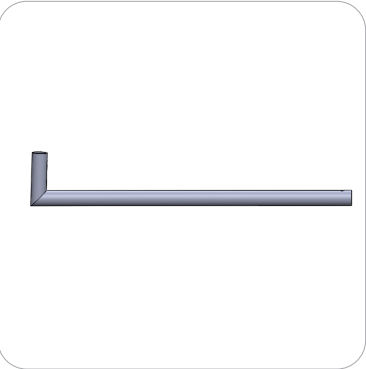
C-WALL-GDBL x1

Included In Your Kit

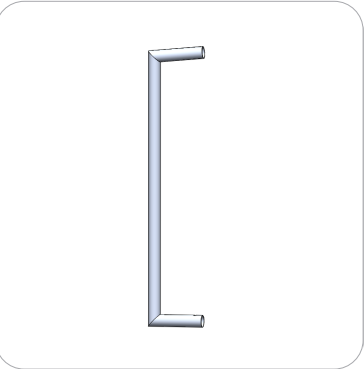
Tubes



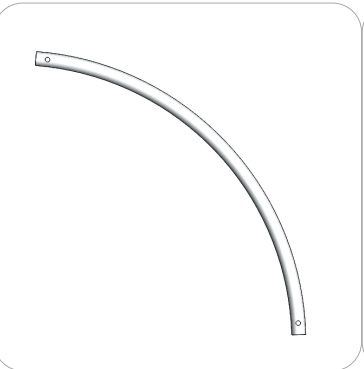
C-WALL-T1 x1



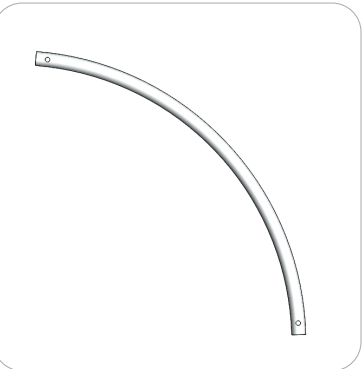
C-WALL-T2 x1



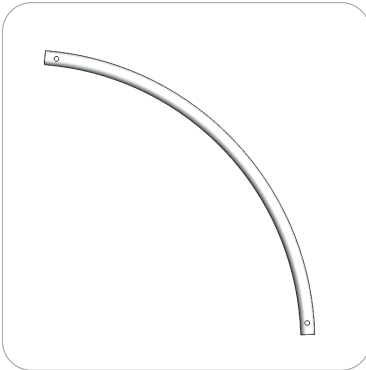
C-WALL-T3 x1



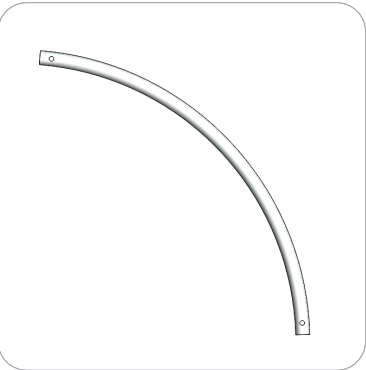
C-WALL-T4 x2



C-WALL-T4-SP x1



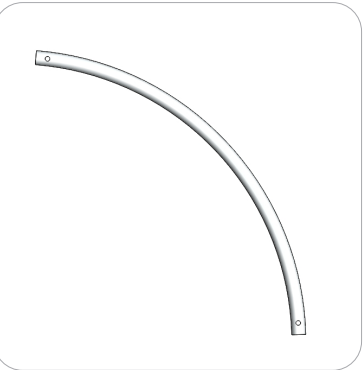
C-WALL-T5 x1



C-WALL-T6 x1



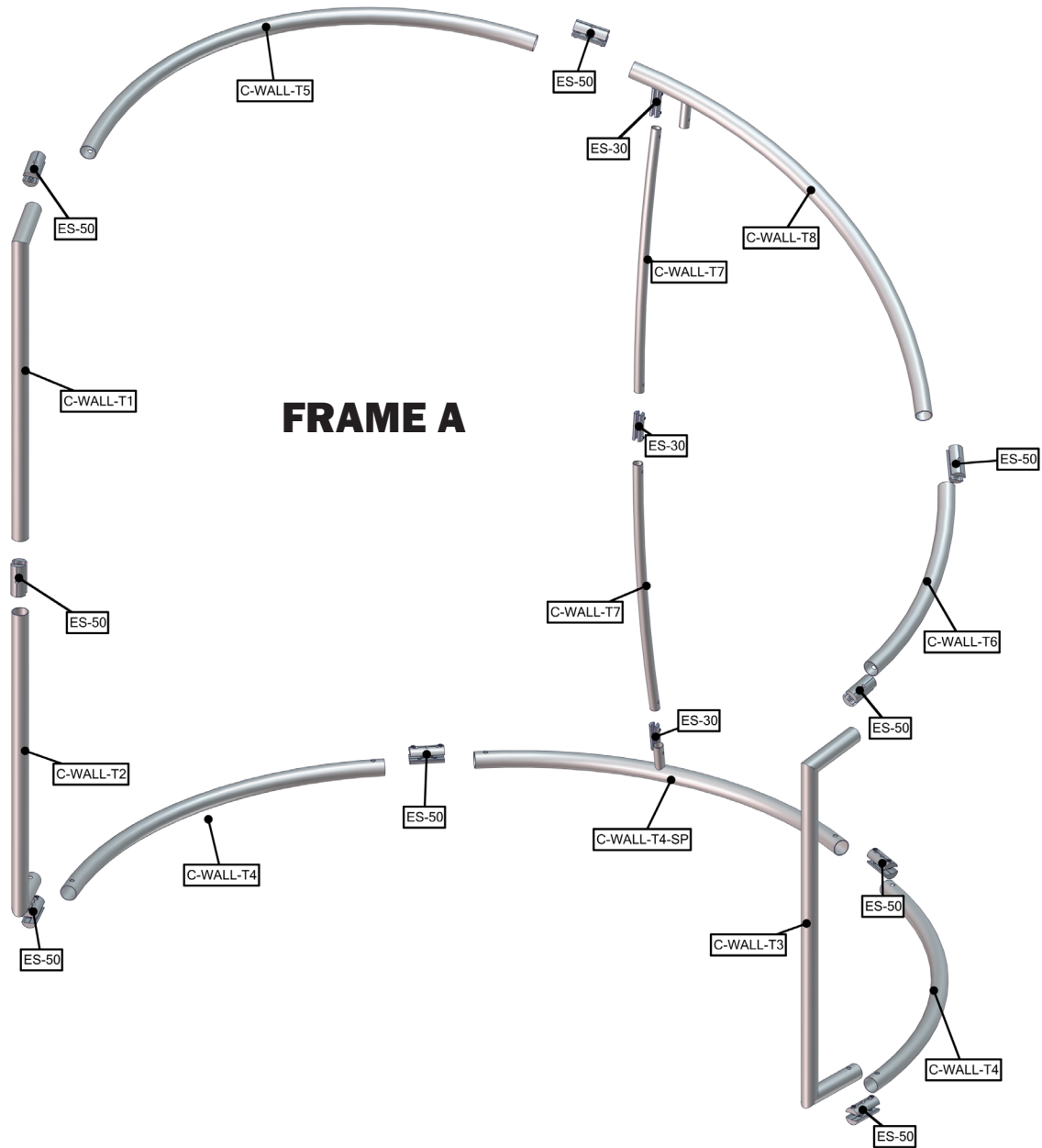
C-WALL-T7 x2



C-WALL-T8 x1

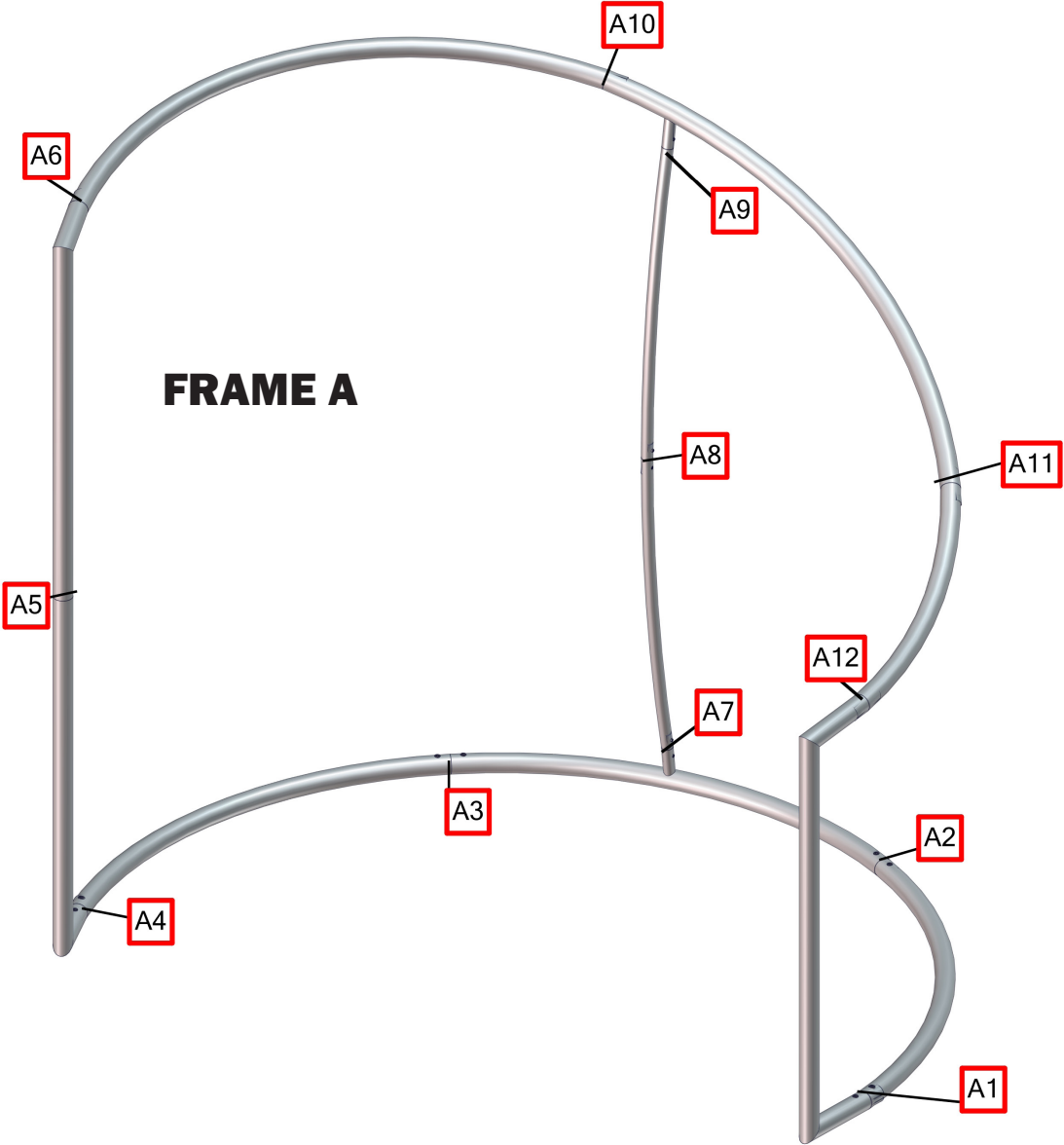
Exploded View

C-WALL



Labeling Diagram

C-WALL



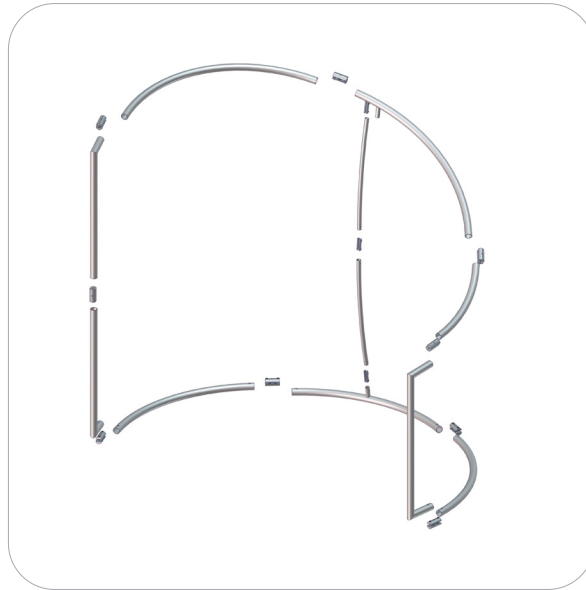
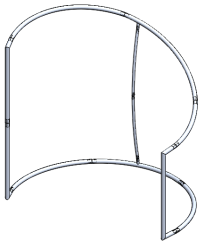
Kit Assembly

Step by Step

Step 1.

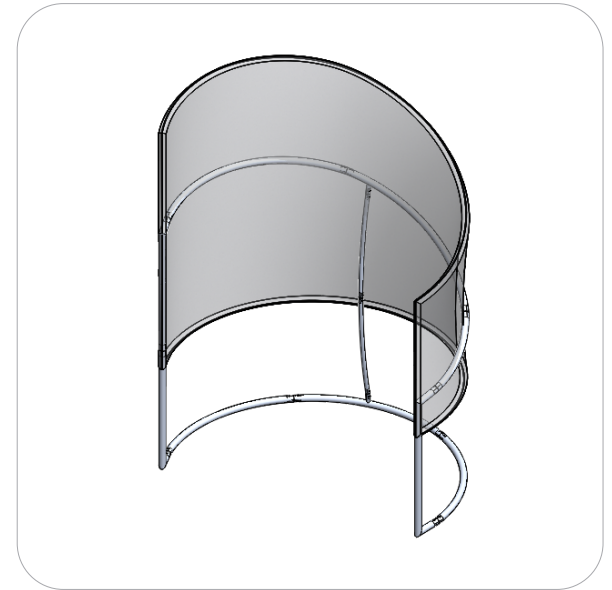
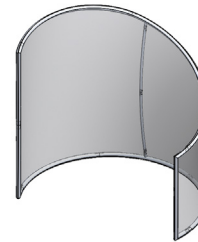
Gather the components necessary for assembling the frame and lay them flat on the floor. Assemble in the order the Labeling Diagram instructs.

Please reference Connection Method 1 for more details.



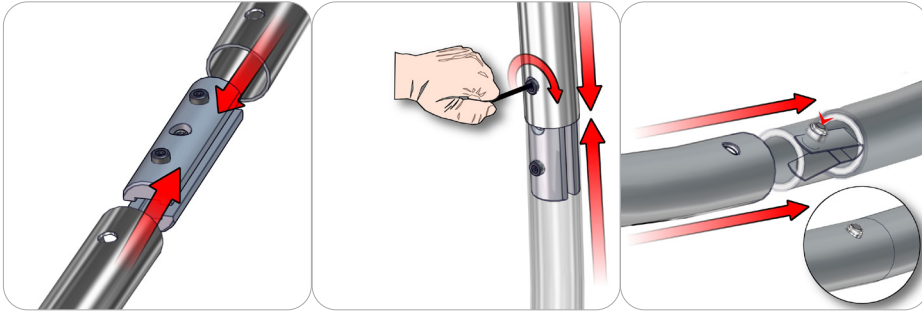
Step 2.

With the frame laying flat on the floor, locate your pillowcase graphic. With the pillowcase unzipped, encase the frame by covering the frame from top to bottom.



Connection Methods

Connection Method 1: ES30 / ES50 / SNAP BUTTONS



For spigot connections, compress the unlocked connector and slide into the tube lock access hole. Lock both screws carefully using your allen key tool. Be sure to lock securely, but do not over tighten. For snap button connections, locate the snap button on the connector or swage tube. Locate the hole on the corresponding tube. Press the snap button with your thumb and slide the tube and connector together so that the snap button snaps fully into the lock hole. To disassemble, press the snap button and pull apart.