

# FALCON FLAG SMALL

FLAGS  
 PRODUCT CODE: FSBS-SB-SM or FSBS-XB-SM







On frame On graphic



Single sided w/spike base



Front

Back

Double sided w/X-Base base



Standard Bases:

or

Pole set

Carry bag (included)

Spike Base

X-Base

X-Base w/ optional water bag

## PRODUCT DESCRIPTION

Perfect for quantity orders, the new flagpole hardware redesign for our Best Seller Falcon Flag is the economical choice. Plus, with upgraded hardware, its new pole connections give more height options. Now in more sizes, you can find your favorite Falcon flags in these heights: XS (7'), SM (8.25'), MD (10.5'), LG (14'), XL (17'). Falcon Flag is intended for display outdoors. Insert the spike base into grass or use the X-base to stand on concrete. We custom print your graphic artwork on polyester mesh by the process of dye sublimation. Our inks heavily saturate the material to create a "bleed-through" effect for our single-sided prints, and double-sided prints are finished with a silver-gray blocker that lays between. Black flag trim is sewn on the edge of the graphic (pole-side), leaving a pocket for pole insertion. A set of grommets are installed on the bottom of the trim in which the short bungee cord (included) can loop through and snugly attach the graphic to the base.

FLAG HEIGHT	8.25' H (From base of pole)
GRAPHIC SIZE	20.25"W x 80.5"H

## GRAPHIC MATERIAL

MESH FABRIC

## GRAPHIC FINISHING

Hemmed edges with pole pocket trim

## DISPLAY CONSTRUCTION

Carbon composite flag poles

## SHIPPING WEIGHTS & DIMENSIONS

Shipping Weight	4 lbs (stand only w/spike base)
	5 lbs (stand, spike base and graphic)
Shipping Dimensions	9 lbs (stand only w/x-base)
	10 lbs (stand, x-base and graphic)
Shipping Dimensions	60"L x 4"W x 4"H

## GRAPHIC TURN AROUND TIME

2 business days after proof approval

AVAILABILITY	CA and PA
--------------	-----------

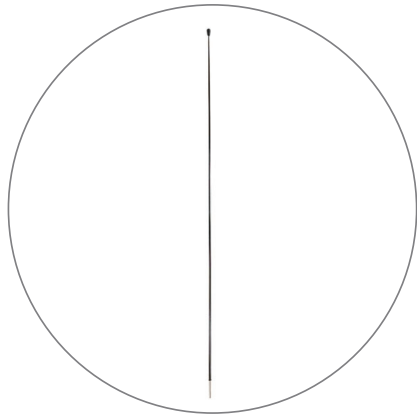
WIND SPEED RATING	18-23mph
-------------------	----------

# FALCON FLAG SMALL

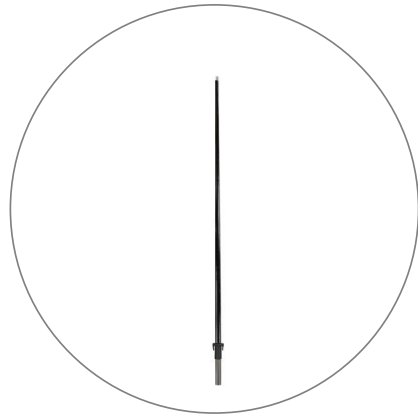
FLAGS

PRODUCT CODE: FSBS-SB-SM or FSBS-XB-SM

## PARTS LIST



(qty 1) Pole #1



(qty 1) Pole#2



(qty 1) Carry Bag

## STANDARD BASE OPTIONS



(qty 1) Spike Base

OR



(qty 1) X-Base

# FALCON FLAG SMALL

FLAGS

PRODUCT CODE: FSBS-SB-SM or FSBS-XB-SM

## AVAILABLE ACCESSORIES



Triangle Spike Base  
FAL-TRI-SB



Water Bag  
WBAG



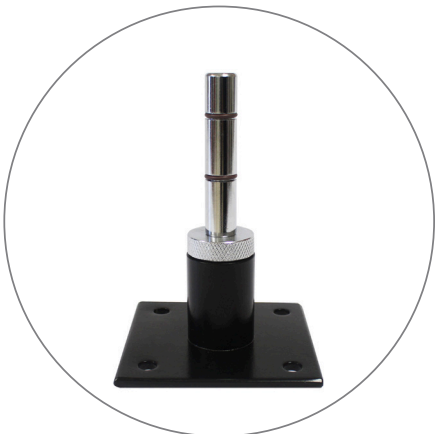
Canopy Mount  
FAL-FLGCNCT  
(Must use with 0° or 30° fixed mount)



Fixed Mount - 0 Degree  
FAL-FM0D



Fixed Mount - 30 Degree  
FAL-FM30D

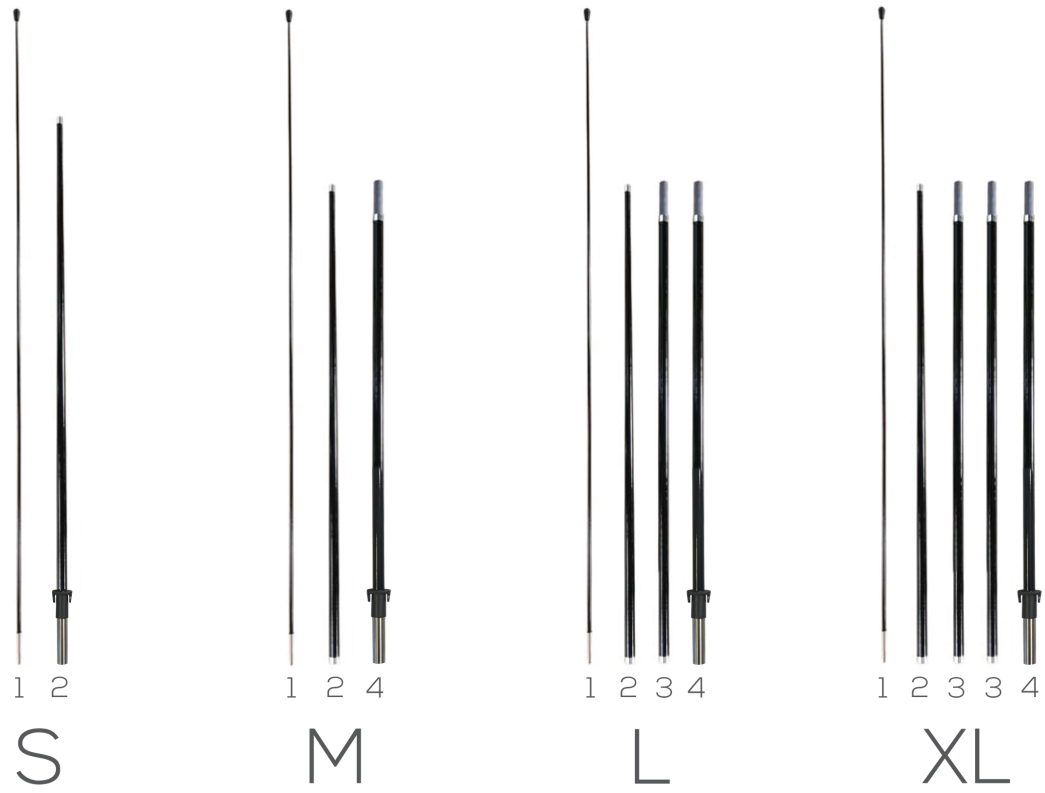


Fixed Mount - 90 Degree  
FAL-FM90D

# FALCON FLAG SMALL

FLAGS  
PRODUCT CODE: FSBS-SB-SM or FSBS-XB-SM

## SET UP INSTRUCTIONS



- A. Flag poles are numbered for easy assembly. Follow guide above for assembly order (Note: Medium flagpole can convert to Large and X-Large size by adding additional pole #3's)
- B. Insert tip of flagpole into the black pocket trim on the flag and push it all the way to the end of the pocket.
- C. Secure flag by lacing the bungee through the grommets on the pocket trim and tethering it to the hook at the base of the pole.
- D. Insert pole into desired base to display flag.

**Spike Base**  
Insert the pointed end of the spike base into the ground. Insert the post with rubber grommets into the opening on bottom of the flagpole to display flag.



**X-Base**  
Unfold legs and insert the post with rubber grommets into the opening on bottom of the flagpole to display flag. A water bag can be added for added stability.

