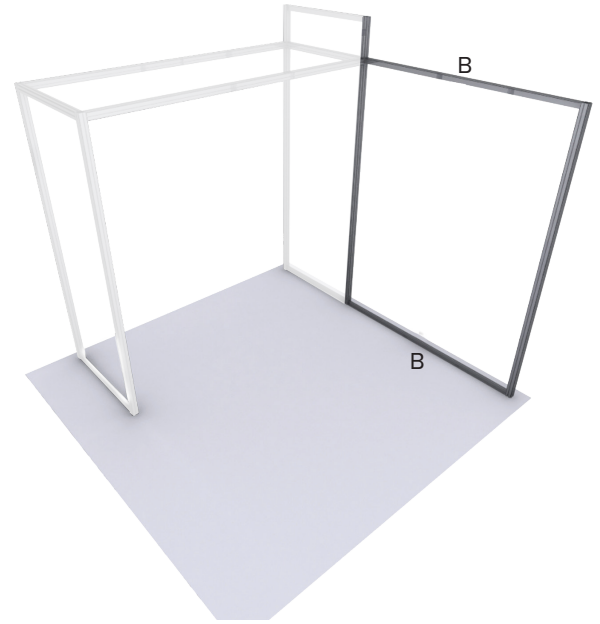
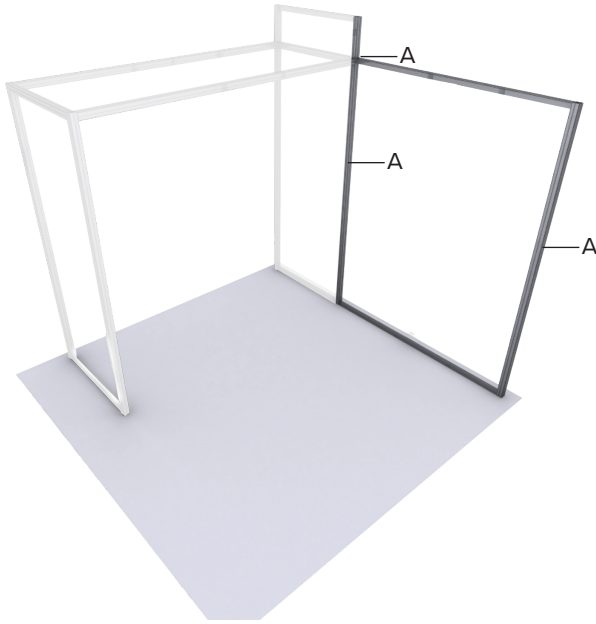


ALPINE BOOTH - CONFIGURATION A

RESORT EXTRUSIONS

PRODUCT CODE: ABA

SET UP INSTRUCTIONS 1/3



1. Locate the Labels on Each Extrusions:

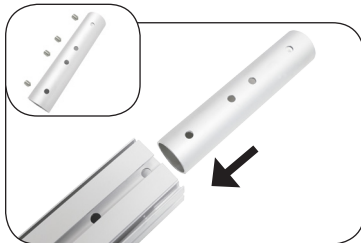


a. First lay out your parts. Put each frame together separately (**Each frame has alphanumeric labels**). We recommend building on flat, soft surface.

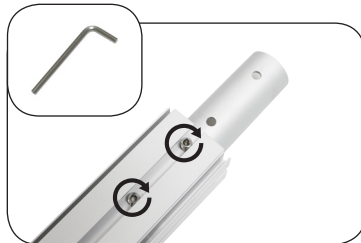


b. See lettered labels on each extrusion piece. Match letters together. (e.g. A-A, B-B). **Reference to Booth Layout above.**

A. Connect Cut Verticals, using Tubular Split Connector.



1. Remove Socket Screws. Insert Tubular Split Connector.



2. Replace Socket Screws and tighten with allen wrench.

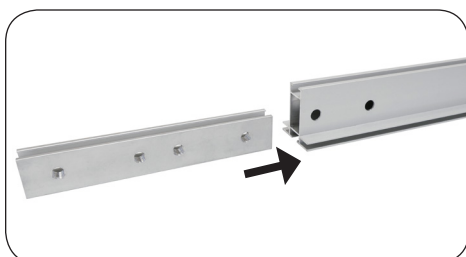


3. Attach other vertical extrusion.

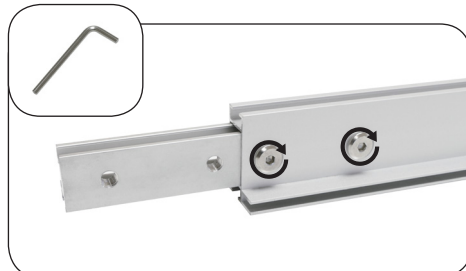


4. Replace Socket Screws and tighten with allen wrench.

B. Connect Cut Horizontals, using Flat Split Connector.



1. Remove Cap Screws from Flat Split Connector.



2. Insert Flat Split Connector, replace Cap Screws and tighten.



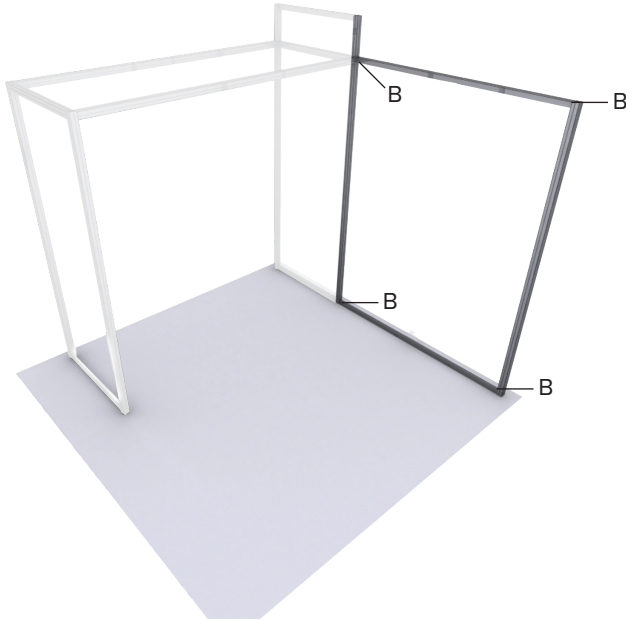
3. Attach other horizontal extrusion, replace Cap Screws and tighten.

ALPINE BOOTH - CONFIGURATION A

RESORT EXTRUSIONS

PRODUCT CODE: ABA

SET UP INSTRUCTIONS 2/3



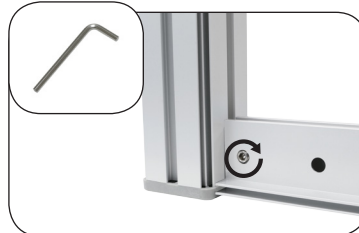
C. Connect Corners:



1. Find End Lock pre-attached to ends of horizontal extrusions.



2. Insert End Lock into groove of vertical extrusion.

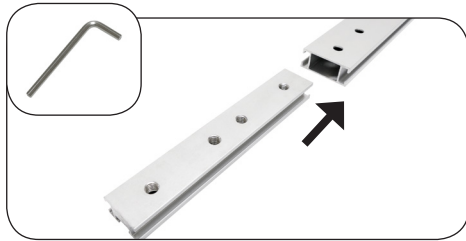


3. Tighten Socket Screw with allen wrench to secure.



4. Repeat to connect all corners.

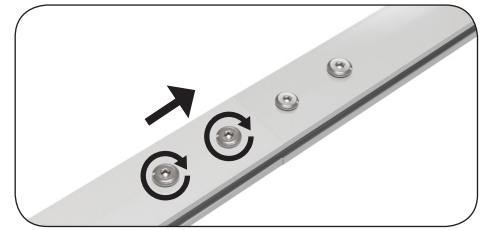
D. Build Middle Support Struts:



1. Remove Cap Screws from Flat Split Connector.

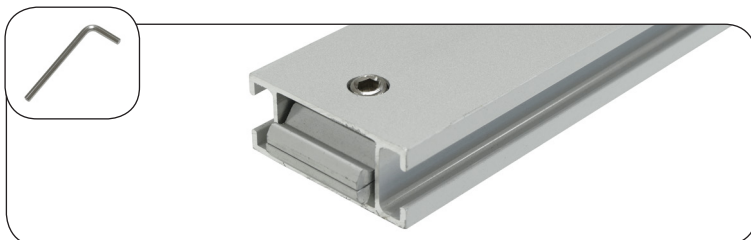


2. Insert Flat Split Connector, replace Cap Screws and tighten.

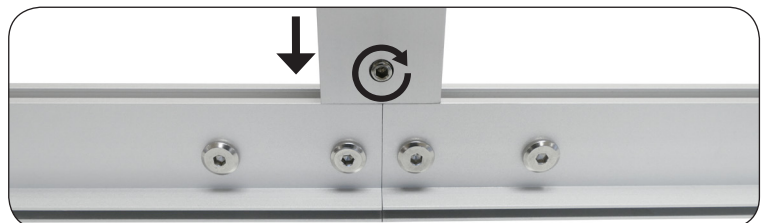


3. Attach other Support Strut extrusion, replace Cap Screws and tighten.

E. Connect Support Strut to Frame:



1. Find End Lock pre-attached to ends of Support Strut extrusion.



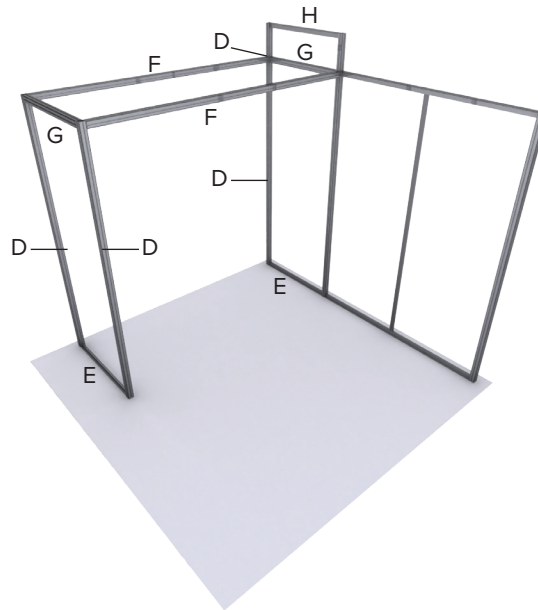
2. Align Support Strut toward center, and insert End Lock into grooves of horizontals. Tighten Socket Screw with allen wrench to secure.

ALPINE BOOTH - CONFIGURATION A

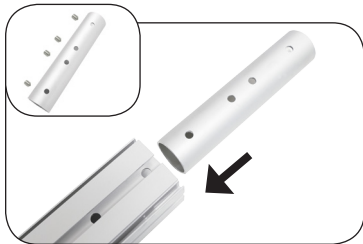
RESORT EXTRUSIONS

PRODUCT CODE: ABA

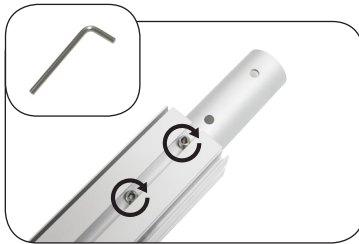
SET UP INSTRUCTIONS 3/3



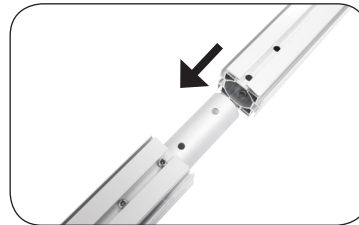
F. Connect Cut Verticals, using Tubular Split Connector.



1. Remove Socket Screws. Insert Tubular Split Connector.



2. Replace Socket Screws and tighten with allen wrench.



3. Attach other vertical extrusion.

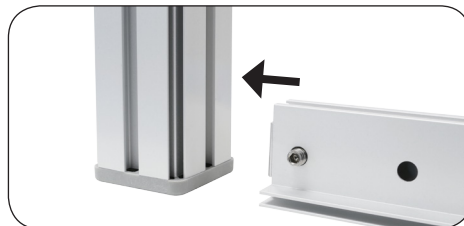


4. Replace Socket Screws and tighten with allen wrench.

G. Connect Corners:



1. Find End Lock pre-attached to ends of horizontal extrusions.

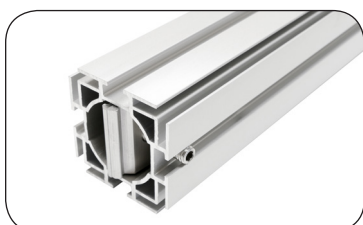


2. Insert End Lock into groove of vertical extrusion.



3. Tighten Socket Screw with allen wrench to secure.

H. Connect Bridge Corners:



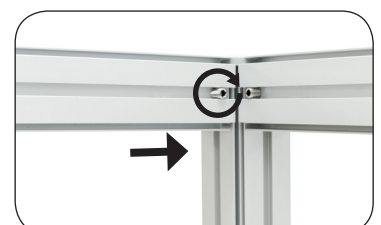
1. Find End Lock pre-attached to ends of horizontal extrusions.



2. Insert End Lock into groove of vertical extrusion.



3. Tighten Socket Screw with allen wrench to secure.



4. Repeat to connect all corners.